



# TRANSITION ACTIVITIES

FOR YEAR 6



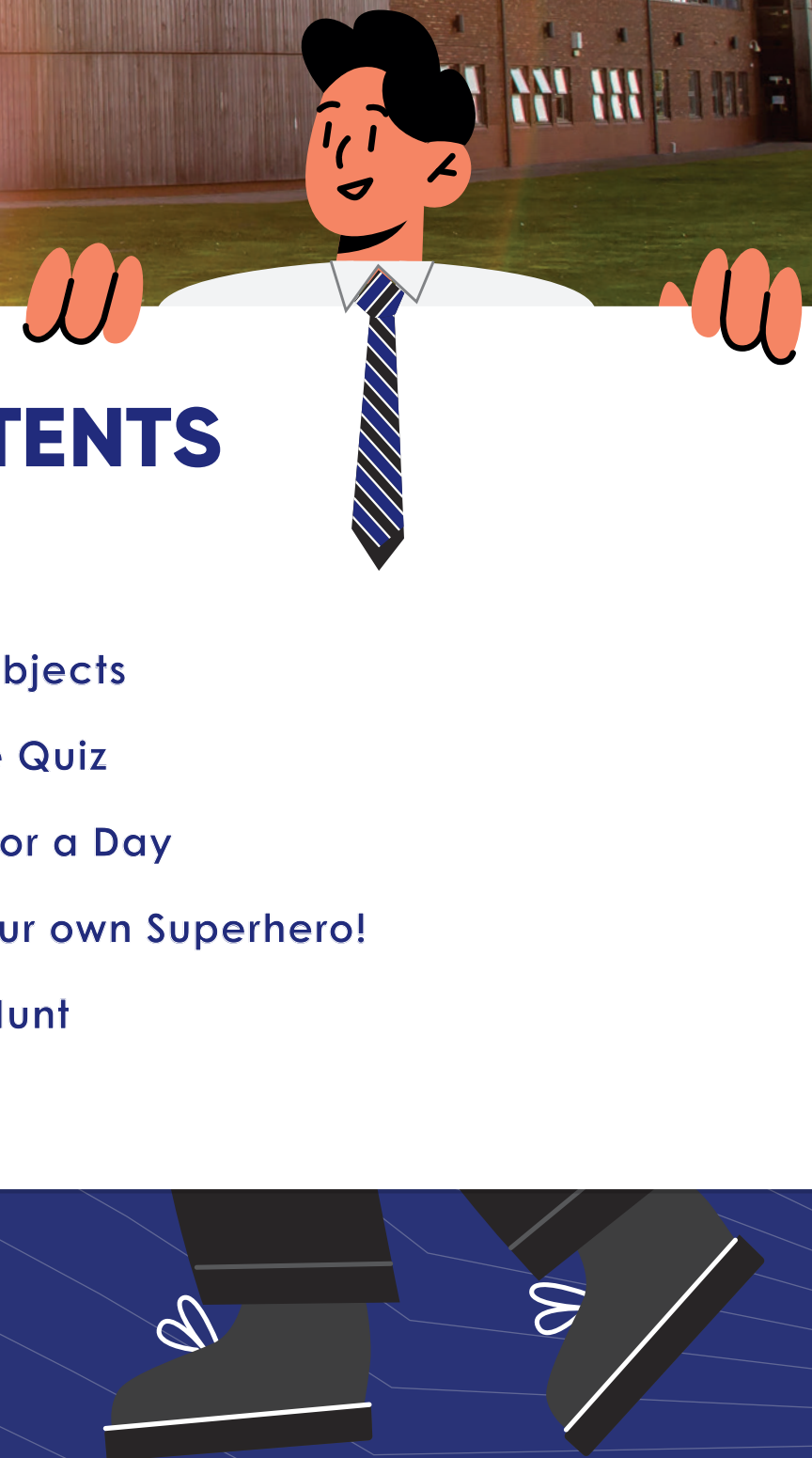
## WELCOME TO GOOLE ACADEMY

We're really looking forward to you joining our school. This booklet contains different activities that will help you learn a bit more about Goole Academy. You'll find the answers you're looking for in our Moving Up Guide, on our website and by watching the transition films on our social media channels.

Good luck!

## CONTENTS

●	Match Up	04
●	Hidden Subjects	06
●	The Goole Quiz	08
●	Principal for a Day	10
●	Design your own Superhero!	12
●	Treasure Hunt	15
●	Answers	17





## MATCH UP

Can you match up some of our important people with the jobs that they do in the academy?

**MR HARRISON**

**MRS HOLT**

**MRS YOUNG**

**MRS SHAW**

**MRS SMITH**

**MRS JOHNSON**

**MRS FOWLER**

**STUDENT RECEPTION**

**SEND CO**

**BRIDGE MANAGER**

**EXECUTIVE PRINCIPAL**

**YEAR 7 YEAR LEADER**

**PRINCIPAL AND  
SAFEGUARDING LEAD**

**INCLUSION MANAGER**

# HIDDEN SUBJECTS

See if you can find all the hidden subjects in this grid. These are some of them that you will be studying in September, when you come to up year 7.

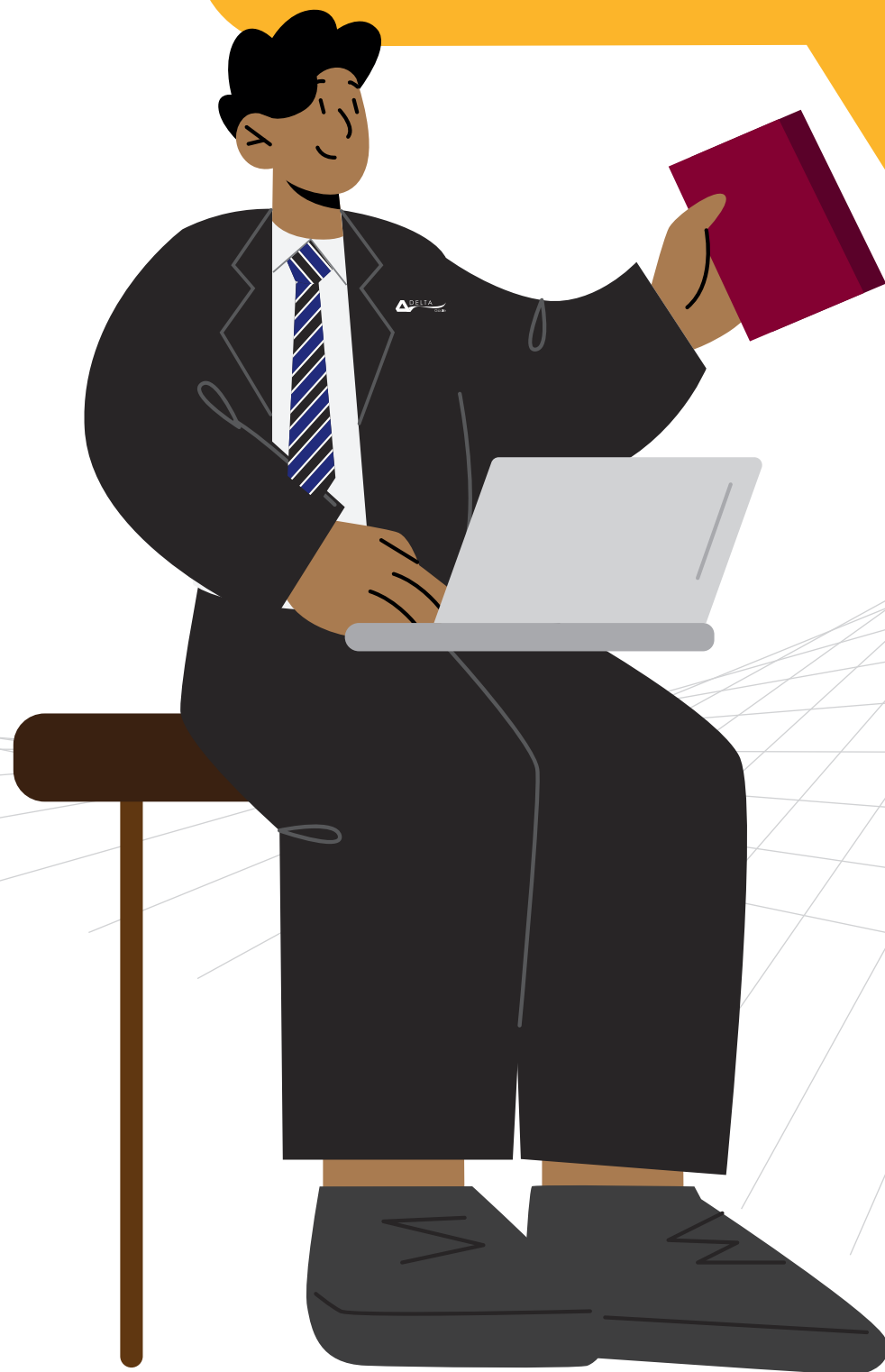


- |               |               |
|---------------|---------------|
| • GEOGRAPHY   | • SCIENCE     |
| • HISTORY     | • COOKING     |
| • DRAMA       | • FRENCH      |
| • MUSIC       | • DESIGN      |
| • ENGLISH     | • SPORTS      |
| • MATHS       | • EPC         |
| • ICT         | • ENGINEERING |
| • PHOTOGRAPHY | • ART         |

G	W	B	S	A	R	T	P	S	F	P	F
E	P	C	S	C	I	Y	U	V	R	H	O
G	G	M	S	T	R	O	P	S	F	O	F
E	S	A	S	C	I	Y	Y	R	O	T	R
O	J	T	U	D	R	A	M	A	I	O	E
G	O	H	Y	O	Q	S	U	K	N	G	N
R	O	S	T	F	A	A	S	N	L	R	C
A	L	S	E	N	G	L	I	S	H	A	H
P	I	O	E	G	L	L	C	E	G	P	G
H	C	O	O	K	I	N	G	R	D	H	D
Y	T	O	N	A	F	G	O	T	W	Y	P
S	T	E	C	N	E	I	C	S	S	C	S
G	E	N	G	I	N	E	E	R	I	N	G
E	S	A	S	C	I	N	G	I	S	E	D

## THE GOOLE QUIZ

Are you ready to come to Goole Academy? Can you answer our quiz to test your knowledge?



1. We are Goole Academy, but what is the name of our Trust?
2. What time does lesson 1 start in a morning?
3. Who is the Executive Principal at Goole Academy?
4. What do the yellow lines mean around the school site?
5. Who do year 7 have lunch time with in the dining room?
6. Mr Atkinson, Mr Beevers, Mr Boulton and Mrs Holt all teach about the world, it's places, people as well as the natural world and how they are all connected. What subject is this?
7. If a teacher raises their hand in the air – what does it mean?
8. In which subject will you study about the periodic table, chemicals and many other exciting things?
9. What time does school finish?
10. In what year will you finish your GCSEs and leave Goole Academy?

# PRINCIPAL FOR A DAY

What would you do if you became principal for just one day? Complete this page and tell us what we would see.

I would make the school better by introducing the following rules...

I would make everyone learn...

I would change the uniform to make everyone wear...

For lunch, I would change the dinner menu to...

If people didn't follow the rules I would...

If people were really good, I would reward them with...





THE WORLD IS READY TO LEARN ALL ABOUT YOUR GOOLE ACADEMY SUPERHERO...

**STEP 1**  
FILL IN ALL OF THE IMPORTANT INFORMATION ABOUT YOUR SUPERHERO – HELP THE WORLD TO UNDERSTAND THEM A BIT BETTER! YOU’LL NEED TO USE GOOLE COLOURS AS PART OF THE DESIGN – (TRY TO WRITE IN FULL SENTENCES!)

<b>NAME:</b>	<b>SECRET NAME (ALTER EGO):</b>
<b>FAVOURITE SCHOOL SUBJECTS</b>	<b>HOW DO THEY KEEP THEIR IDENTITY SECRET?</b>
<b>COSTUME</b> MATERIAL –  SPECIAL FEATURES –	<b>WHO IS YOUR SUPERHERO’S ARCH NEMESIS?</b>
<b>SUPERPOWERS</b> POWER № 1 –  POWER № 2 –  POWER № 3 –  HOW DID THEY GET THEIR SUPERPOWERS?	

**DON'T FORGET!**  
THE WINNING SUPERHERO DESIGN ENTRY WILL RECEIVE A PRIZE! YOU'LL NEED TO BRING YOUR DESIGNS WITH YOU ON YOUR FIRST DAY AND HAND THEM TO MR BOULTON.

THE WORLD IS READY TO SEE YOUR SUPERHERO...

**STEP 2**  
DESIGN YOUR SUPERHERO – DRAW YOUR SUPERHERO BELOW OR TRACE ONE OF THE OUTLINES TO HELP YOU. (DON'T FORGET TO USE GOOLE COLOURS!)

**POWERS IN ACTION!**  
IN EACH BOX, WRITE DOWN ONE OF YOUR SUPERHERO’S POWERS AND DRAW IT IN ACTION...






CREATE A COMIC STRIP FOR YOUR SUPERHERO'S FIRST DAY OF SECONDARY SCHOOL!

- YOUR STORY TAKES PLACE AT GOOLE ACADEMY AND NEEDS TO INCLUDE:
- A SHORT DESCRIPTION OF WHAT IS HAPPENING ABOVE EACH SCENE;
  - SPEECH AND THOUGHT BUBBLES FOR YOUR CHARACTERS;
  - A BEGINNING, MIDDLE AND END;
  - AND LOTS OF TWISTS AND TURNS!


TREASURE HUNT

Learning your way around a new school can feel scary, but we know you'll settle in before you know it! Can you use the clues below to find different rooms in Goole Academy?



1

You're on the ground floor and you're in E Block, What's the big hall where you might do PE?

\_\_\_\_\_

2

You're Q Block on the first floor, what lesson's in store?

\_\_\_\_\_

3

Now you're in Q Block, back on the ground floor, What subject will you study in the rooms closest to E-Block?

\_\_\_\_\_

4

Now you're in G Block, still on the ground floor, Where would you go to fry, bake, boil and more?

\_\_\_\_\_

5

You're still in G Block, first floor, what will you study in one of the rooms above DT?

\_\_\_\_\_

6

Head up to the top floor of Q-Block, what lessons would you find up here?

\_\_\_\_\_

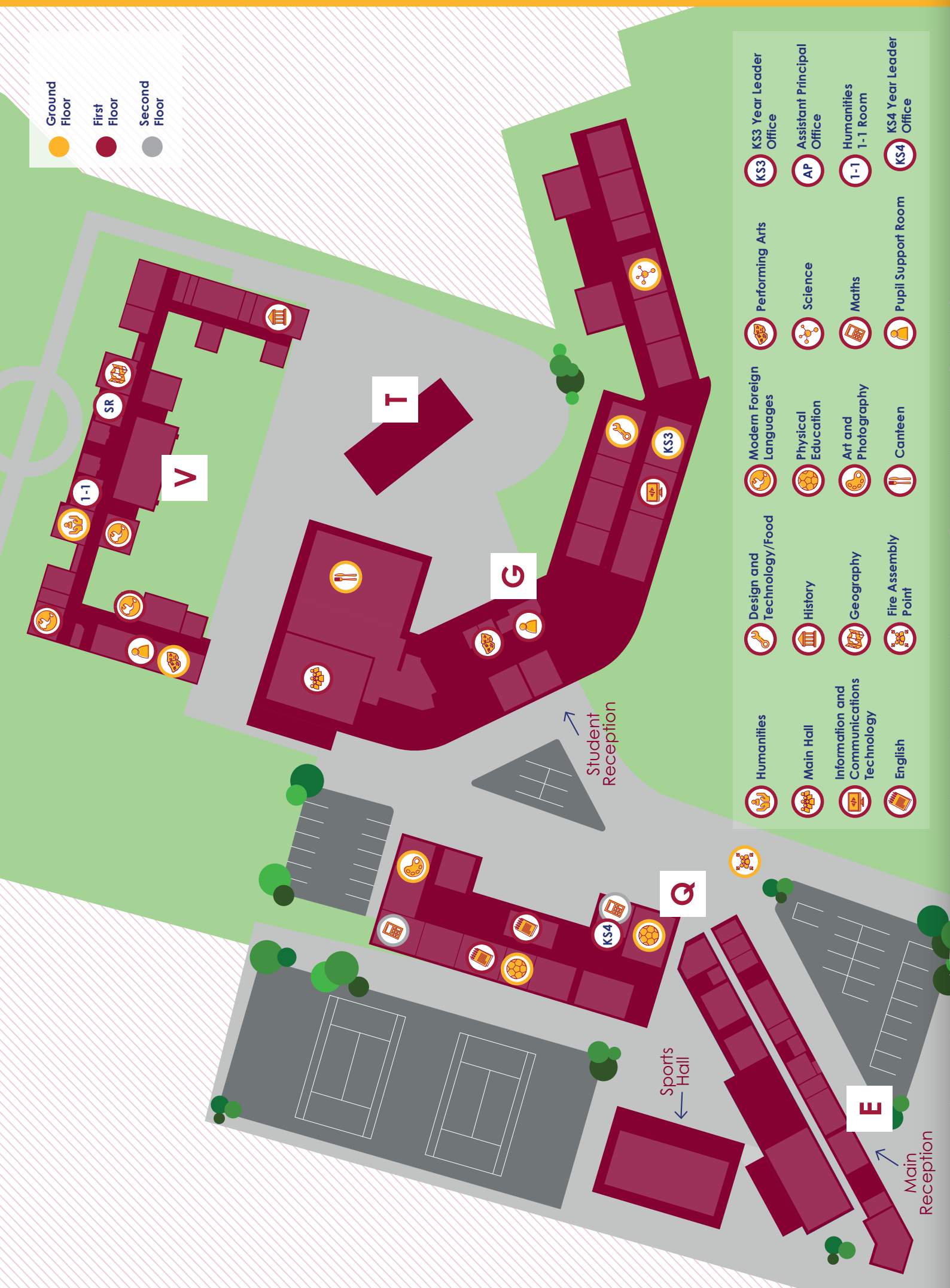


Once you have solved all the clues, unscramble the highlighted letters to find the secret word!

W

\_\_\_\_\_





# ANSWERS

## MATCH UP

MR HARRISON  
MRS HOLT  
MRS YOUNG  
MRS SHAW  
MRS SMITH  
MRS JOHNSON  
MRS FOWLER

STUDENT RECEPTION  
SENDCO  
BRIDGE MANAGER  
EXECUTIVE PRINCIPAL  
YEAR 7 YEAR LEADER  
PRINCIPAL AND SAFEGUARDING LEAD  
INCLUSION MANAGER

## THE GOOLE QUIZ

1. Delta Academies Trust
2. 8:25am
3. Mr Harrison
4. Out of bounds
5. No-one, it's just year 7
6. Geography
7. Everyone needs to be quiet, face the teacher and listen.
8. Science
9. 2:30pm
10. 2027

# HIDDEN SUBJECTS

G	W	B	S	A	R	T	P	S	F	P	F
E	P	C	S	C	I	Y	U	V	R	H	O
G	G	M	S	T	R	O	P	S	F	O	F
E	S	A	S	C	I	Y	Y	R	O	T	R
O	J	T	U	D	R	A	M	A	I	O	E
G	O	H	Y	O	Q	S	U	K	N	G	N
R	O	S	T	F	A	A	S	N	L	R	C
A	L	S	E	N	G	L	I	S	H	A	H
P	I	O	E	G	L	L	C	E	G	P	G
H	C	O	O	K	I	N	G	R	D	H	D
Y	T	O	N	A	F	G	O	T	W	Y	P
S	T	E	C	N	E	I	C	S	S	C	S
G	E	N	G	I	N	E	E	R	I	N	G
E	S	A	S	C	I	N	G	I	S	E	D

# TREASURE HUNT

1

SPORTS HALL \_

2

ENGLISH \_

3

PE \_

4

FOOD \_

5

ICT \_

6

MATHS \_

L

E

C

O

M

W

E

L

C

O

M

E

!

## HEAR FROM OUR STUDENTS...

"When you come up to high school don't be scared, there might be a lot to remember but you will get used to it, you get a planner to write things down in and I found it helps me to remember what I need, like PE kit or food for cooking."



"Work hard and enjoy the lessons because if you do well, you will be rewarded in celebrations assemblies and with postcards and stickers."



"Don't let other people try and get you into trouble, it's not worth it!"



"When it comes to moving around the different buildings, make sure you look at your timetable because it says which room and building you are in. There are lots of different lessons and lots of different teachers but you will find your way around really quickly."



"Don't worry about coming here without anyone you know, making friends was quick and easy and there is always someone to talk to at breaks and dinner."



"Don't be afraid, you might get lost or make mistakes, but you will get there, there are lots of staff and other students around to help you. Don't be afraid to ask for help."



You'll love it here!





**Goole Academy**  
Centenary Road  
Goole  
DN14 6AN

01405 504 000  
[transition@gooleacademy.org.uk](mailto:transition@gooleacademy.org.uk)  
[gooleacademy.org.uk](http://gooleacademy.org.uk)